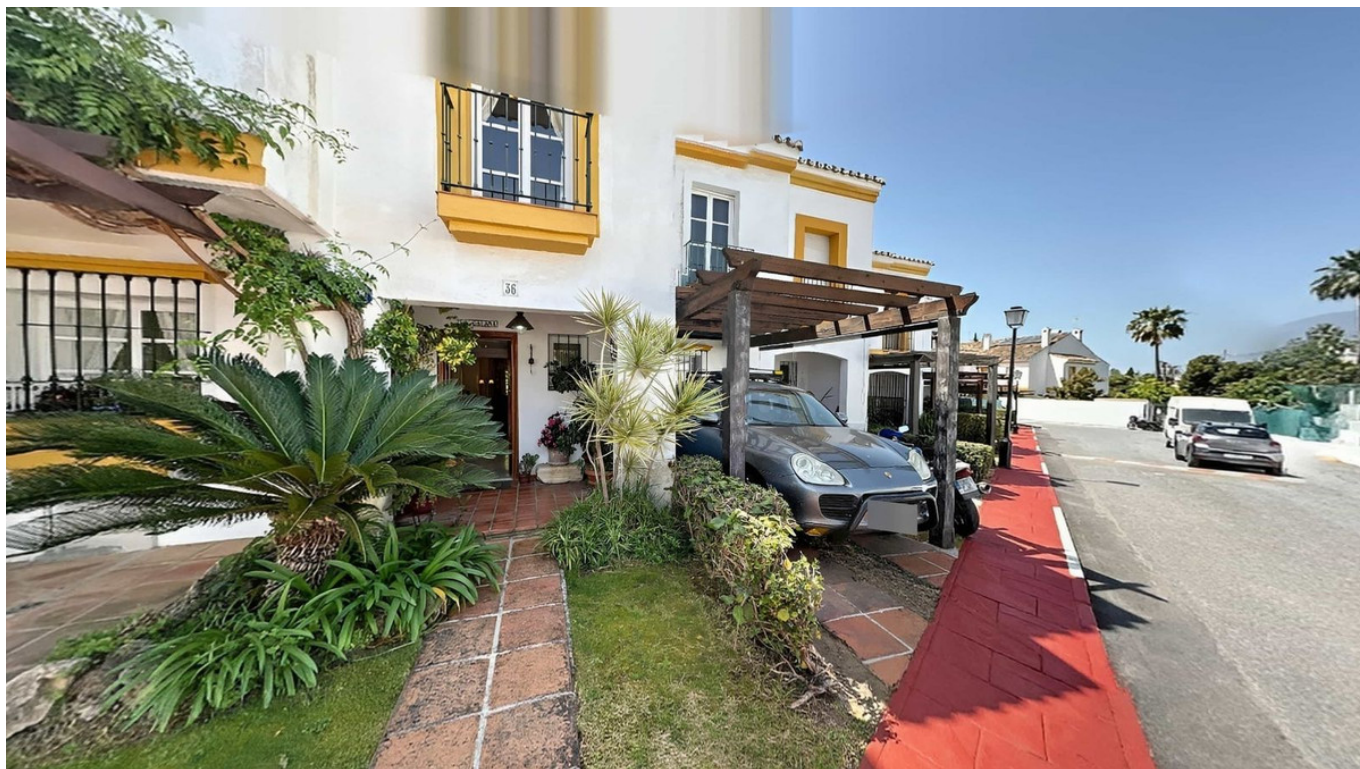


Townhouse for sale in Atalaya, Costa del Sol

5 Bedrooms | 3 Bathrooms | 160 m² Interior | 30 m² Terraces | **Garden** Yes | **Pool** Yes
€ 600 IBI | € 60 Rubish tax | € 2,160 Community fees



Property Description

FANTASTIC FAMILY TOWNHOUSE IN RESIDENCIAL DIANA

SPACE. PRIVATE GARDEN. POOL. SERVICES. BEACH.

Spacious Mediterranean-style townhouse in the well-maintained gated community of Residencial Diana. An ideal home for families looking for space, comfort, a private garden and a highly practical location on the Costa del Sol.

The property offers approx. 160 m² built, a comfortable layout, plenty of natural light, a private garden with fruit trees and three parking spaces. It is sold fully furnished and ready to move into.

PROPERTY HIGHLIGHTS

- Approx. 160 m² built
- Private garden with lemon, avocado and bay leaf trees
- Three parking spaces
- Fully furnished
- Ready to move into
- Spacious living-dining room with fireplace
- Separate kitchen with laundry area and pantry

- Direct access to the garden from both the kitchen and living room
- Master bedroom with en-suite bathroom and solarium terrace
- Two additional bedrooms
- Office / study
- Fitted wardrobes
- Pre-installation for air conditioning
- Possibility to build a basement floor

COMMUNITY

Residencial Diana is a gated, very well-maintained community with communal areas that are especially attractive for families.

- Communal swimming pool very close to the property
- Pool area well integrated into a large communal space, not directly in front of the house
- Large landscaped garden areas
- Lawns
- Paddle tennis court
- Barbecue area
- Well-kept and family-friendly environment

LOCATION

One of the great advantages of this property is its everyday convenience. Just outside the urbanization, there is a commercial centre with restaurants, pharmacy, hairdresser, shops and services.

- Commercial centre just a few steps away
- Restaurants, pharmacy, hairdresser and daily services nearby
- Bus stop very close
- Beach within easy walking distance
- Approx. 5 km to Puerto Banús
- Approx. 9 km to Estepona
- Approx. 13 km to Marbella
- Excellent connection to the N-340

An excellent option for families looking for a spacious home with a private garden, attractive communal areas and everything needed for daily life practically on the doorstep.

Contact us for more information or to arrange a viewing.